



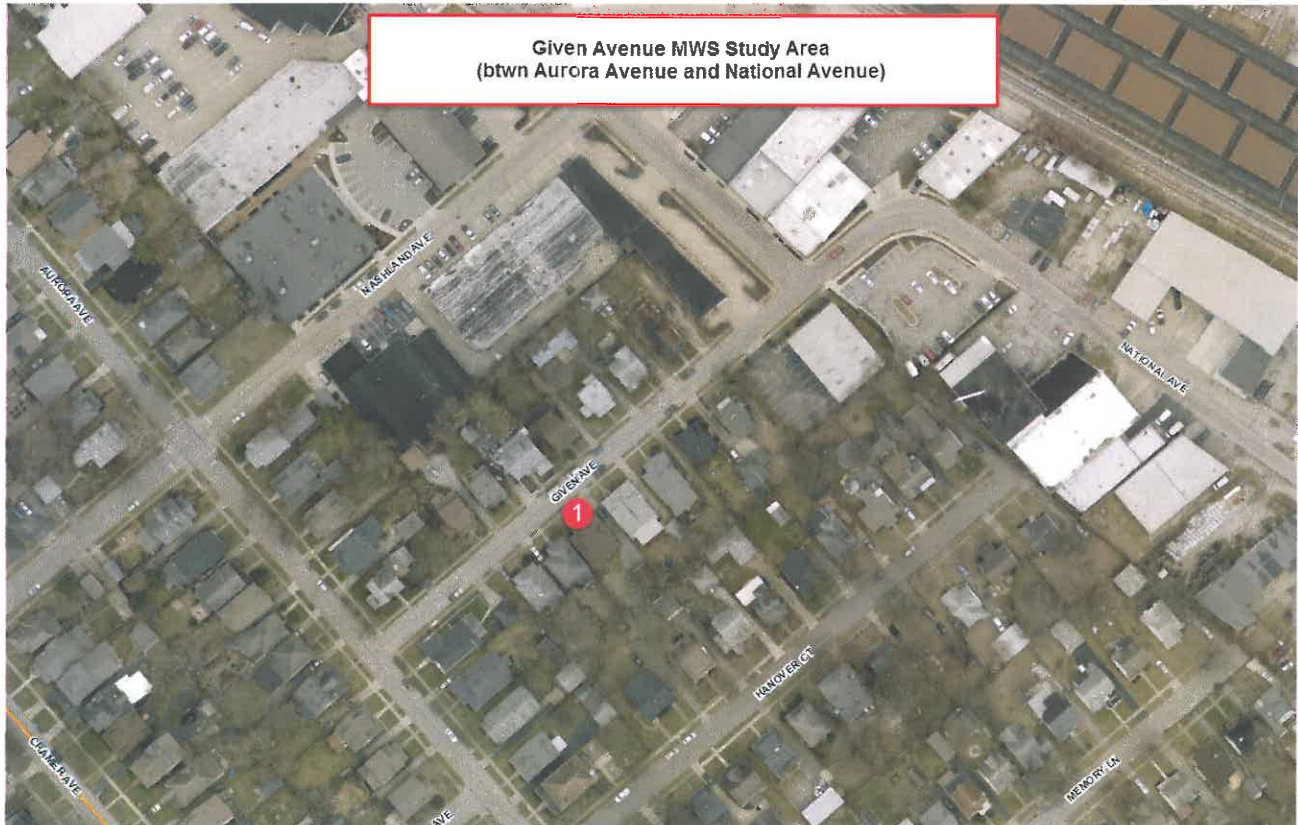
To: Sally Lambert-Warfield  
Legislative Aide to Councilmember Jake Gibbs

From: *Roger T. Mulvaney*  
Roger T. Mulvaney, P.E.  
Traffic Engineer Manager, Division of Traffic Engineering

Date: September 29<sup>th</sup>, 2016

Re: Given Avenue Traffic Calming Study

Per your request, a study was completed on Given Avenue between Cramer Avenue and National Avenue to determine if traffic calming measures are warranted on this local residential street. The study looked at the volume and speed of vehicles utilizing the street. Volume and speed data were collected at one point on Given Avenue in the study area for a 96-hour period.



Aerial of Given Avenue study area and surrounding area



Data revealed that the average daily traffic over this 4-day period was 254 vehicles per day at 312/313 Given Avenue. The 85<sup>th</sup> percentile speed of vehicles on Given Avenue ranged from 26.12mph to 37.00mph. In addition, it was documented that 17.60% to 32.03% of the vehicles traveling on Given Avenue were traveling over the posted speed limit of 25 mph. The average speed of the vehicles on Given Avenue ranged from 19 to 25 mph depending on the location. The table below shows the data that was obtained over the study time period:

Location	Average Speed (mph)	Mode Speed (mph)	% over 25 mph	85 <sup>th</sup> Percentile Speed (mph)	Peak Hour Volume (vehicles)		Average Daily Traffic Volume (vehicles)	
NB Given Ave. (@ 312 Given Ave.)	19	15	17.60%	26.12	30	48	204	254
SB Given Ave. (@ 313 Given Ave.)	25	15	32.03%	37.00	18		50	

A review of the collision history revealed zero collisions in the last three years on Given Avenue in the study area.

Given Avenue is typically 23 feet wide, with on street parking permitted on both sides of the street, box curbs and no gutters, between Cramer Avenue and National Avenue. No pavement markings are present on Given Avenue in the study area, but sidewalks and street lighting are present in this area. Given Avenue intersects Cramer Avenue on the west side and National Avenue on the east side of the study area.



**Recommendations:**

As detailed in the *Neighborhood Traffic Management Program* (NTMP) manual, Given Avenue does not meet the minimum criteria for mitigation actions along a residential local street based on the documented traffic volumes and speeds. The criterion includes Peak Hour Volumes greater than 100 vehicles per hour and an Average Daily Traffic Volume greater than 1,000 vehicles per day. **Based on the traffic data and current NTMP criteria, Given Avenue does not meet guidelines for Type 2 traffic calming devices including speed tables. At this point, the Division of Traffic Engineering will install (1) one NTMP Specialty speed limit sign along SB Given Avenue, due to 85<sup>th</sup> percentile speed measured at or more than 5 miles per hour over the posted speed limit.** The speed data collected for this study will be shared with the Division of Police for their information.

If you have any questions, feel free to contact me at 258-3830 at any time or via email at [rmulvaney@lexingtonky.gov](mailto:rmulvaney@lexingtonky.gov).

Sincerely,

Roger T. Mulvaney, P.E.  
Traffic Engineer Manager  
Division of Traffic Engineering

RTM/gmt

cc: Jake Gibbs, 3<sup>rd</sup> District Councilmember  
Dowell Hoskins-Squier, P.E., Commissioner of Environmental Quality & Public Works  
Jeffrey Neal, P.E., Director of Traffic Engineering  
Jim Woods, P.E., P.L.S., Deputy Director of Traffic Engineering  
Chad Bacon, Lieutenant, Division of Police  
Sally Warfield, Aide to CM Gibbs

